

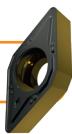
NEW

ON TOP OF EFFICIENCY

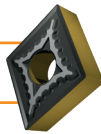
PRAMET

A new generation turning grade has been introduced offering one of the highest levels of productivity and versatility in the market today. The T9415 is our most advanced MT-CVD grade, bringing greater stability and performance in various cutting conditions. It covers a broad application range, replacing our previous T9310 and T9315 grades. In addition, it also partly overlaps with grade T9325, making T9415 the first choice for steel turning.

- ▶ **FIRST CHOICE GRADE**
for various steel (ISO-P) turning.
- ▶ **HIGH PRECISION**
improves indexing accuracy and reduces idle time.
- ▶ **IMPROVED RELIABILITY**
especially in unstable conditions.
- ▶ **REDUCED CUTTING FORCES**
and enhanced performance.
- ▶ **BETTER SEATING STABILITY**
and improved overall tool life.
- ▶ **SUSTAINABLE**
and environmentally friendly offer.

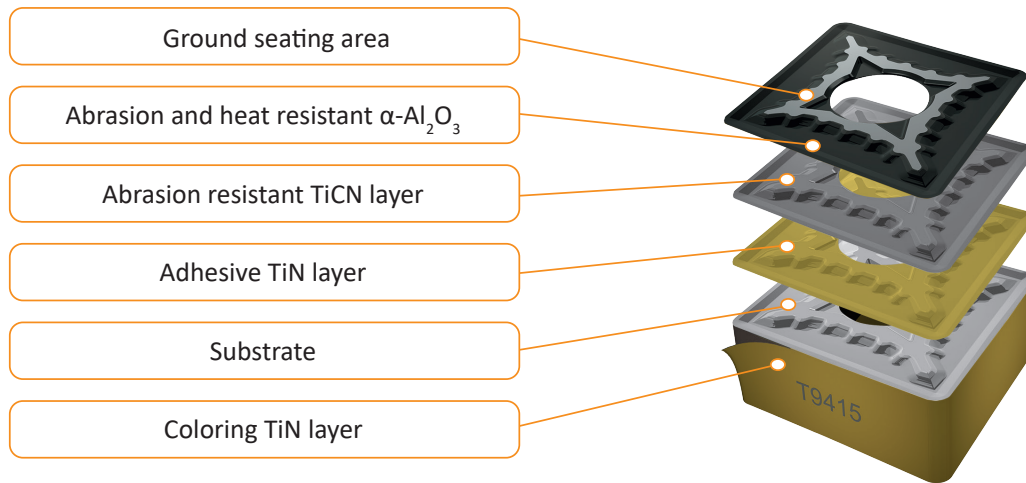
**T9415****T9415**

- Positive inserts
- Steels, cast irons, hard steels

T9415

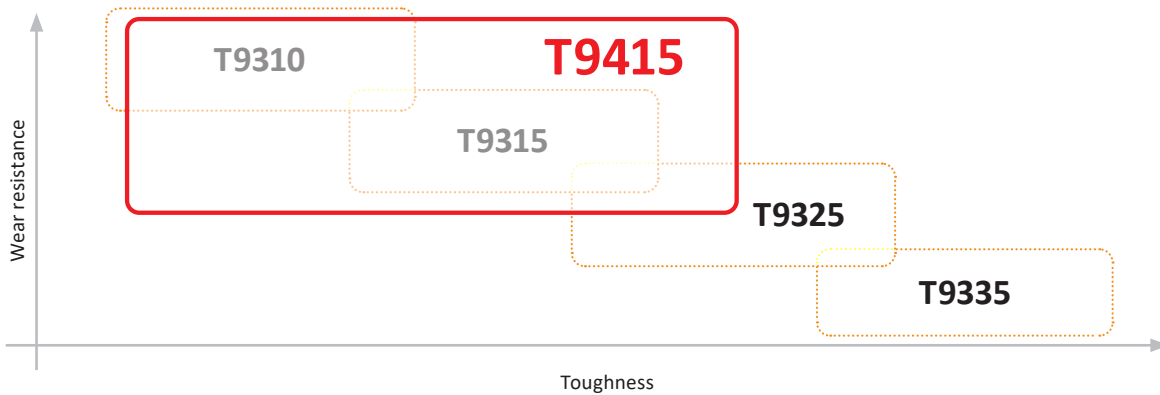
- Negative inserts
- Steels, cast irons, hard steels

Dormer Pramet Authorized Distributor

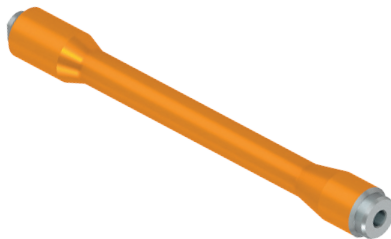


New CVD coating is 30 % thicker compared to previous grade.

APPLICATION AREA OF MT-CVD TURNING GRADES



SUCCESS STORY - T9415



Company: Manufacturer of quality precision parts for energy, building and automotive industries.
 Component: Double end-stud
 Material: 15142 (42CrMo4 alloy structural steel)
 Coolant: Yes
 Application: External continuous turning of slim workpiece
 Previous result: The customer used a previous generation turning grade which completed three pieces per cutting edge.

Dormer Pramet solution		
TNMG 332-SM:T9415 (TNMG 160408-SM:T9415)		
Machining data		
v_c	f_n	a_p
820 (250)	.016 (0.4)	.118 (3)

Result with T9415: Applying the new grade, the customer was able to machine at a higher speed and completed six pieces with one cutting edge. This not only significantly increased productivity, but also doubled the life of the cutting tool.