

NEW

PRODUCTIVE TANGENTIAL SHOULDER MILLING

PRAMET

A new assortment of LNEX 12 negative tangential inserts, with four cutting edges, provides a highly productive solution for a wide range of applications. The Pramet LNEX 12 insert has been designed for square shoulder milling, with a maximum depth of cut up to 0.39", offering stable clamping and a strong cutting edge. Its robust cutter body provides long tool life and excellent breakage resistance, while also reducing chatter.

- ▶ **PRODUCTIVE SOLUTION**
for a wide range of applications, with increased feed per tooth and depth of cut.
- ▶ **SMOOTH CUTTING ACTION**
reduced spindle load, excellent chip evacuation and process stability.
- ▶ **TRUE 90° CORNER**
with improved wall accuracy and straightness.
- ▶ **IMPROVED CHIP EVACUATION**
expands application range for low-power machines and small depths of cut.
- ▶ **OPERATIONAL VERSATILITY**
offering an economic solution.



ISLN12X



LNEX-F



- Productive 4-edged ground insert
- Low carbon steels, soft stainless steels
- Light to medium cuts

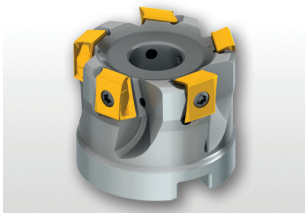
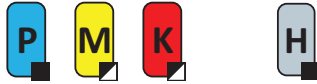
LNEX-M



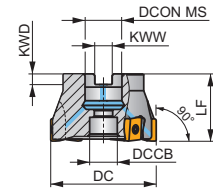
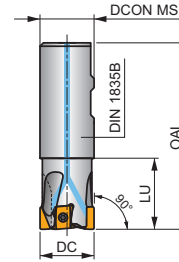
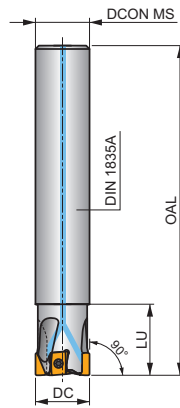
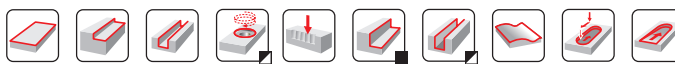
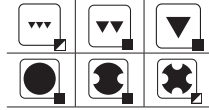
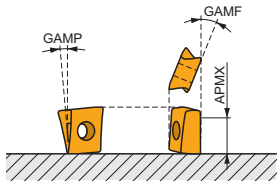
- Productive 4-edged ground insert
- Steels and cast irons, possibly hard steels
- Medium to rough cuts

Dormer Pramet Authorized Distributor

ISLN12X

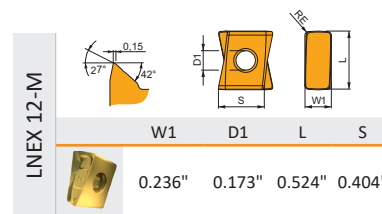
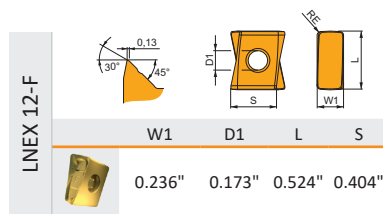


KAPR 90°



Product	DC	OAL	LU	LF	DCON	DCCB	KWW	KWD	GAMF	GAMP		
	[inch]	[inch]	[inch]	[inch]	[inch]	[inch]	[inch]	[inch]	[°]	[°]		
100A2R315C100-ISLN12X-C	1.000	6.693	3.150	-	1.000	-	-	-	-5°	-22.5° - -30°	2	-
	1.250	7.677	3.550	-	1.250	-	-	-	-5°	-22.5° - -30°	3	-
	1.500	7.677	1.969	-	1.250	-	-	-	-5°	-22.5° - -30°	4	-
100A2R165W100-ISLN12X-C	1.000	3.937	1.654	-	1.000	-	-	-	-30°	-5°	2	-
	1.250	4.331	1.654	-	1.250	-	-	-	-22.5°	-5°	3	-
	1.500	4.724	2.000	-	1.250	-	-	-	-22.5°	-5°	4	-
150A04R-IS90LN12X-C	1.500	-	-	1.575	0.500	0.433	0.260	0.165	-17.5° - -22.5°	-5°	4	✓
	2.000	-	-	1.575	0.750	0.629	0.323	0.193	-17.5° - -22.5°	-5°	5	✓
	2.000	-	-	1.575	0.750	0.629	0.323	0.193	-17.5° - -22.5°	-5°	6	-
	2.500	-	-	1.575	0.750	0.629	0.323	0.193	-17.5° - -22.5°	-5°	6	✓
	2.500	-	-	1.575	0.750	0.629	0.323	0.193	-17.5° - -22.5°	-5°	8	-
	3.000	-	-	1.969	1.000	0.826	0.382	0.244	-17.5° - -22.5°	-5°	7	✓
	3.000	-	-	1.969	1.000	0.826	0.382	0.224	-17.5° - -22.5°	-5°	10	-
	4.000	-	-	1.969	1.500	1.417	0.630	0.394	-17.5° - -22.5°	-5°	8	✓
	5.000	-	-	2.480	1.500	1.417	0.630	0.394	-17.5° - -22.5°	-5°	12	✓

Inserts



ISO		M6330	M8310	M8330	M8340	M9315	M9325	M9340
LNEX 12	LNEX12 10 08 SR-F	●	●	●	●			
	LNEX12 10 12 SR-F	●	●	●				
	LNEX12 10 08 SR-M	●	●	●	●	●	●	●
	LNEX12 10 12 SR-M		●	●	●			
	LNEX12 10 16 SR-M		●		●			
	LNEX12 10 20 SR-M			●	●	●		
	LNEX12 10 24 SR-M			●	●	●		

Insert ordering codes are the ISO code followed directly by : and the grade. For example, LNEX12 10 08 SR-F:M6330